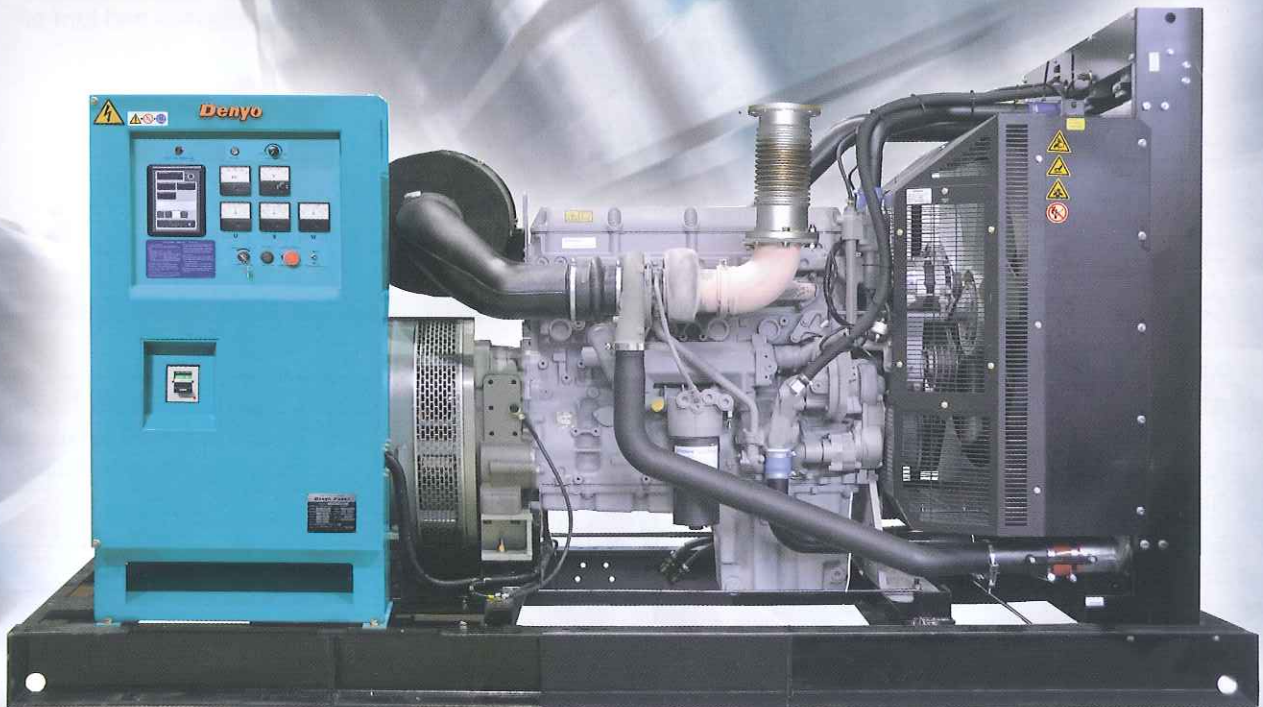


DIESEL ENGINE DRIVEN GENERATING SET

DCA-400P**■ Alternator designed and made by Denyo, makes denyo best generator**

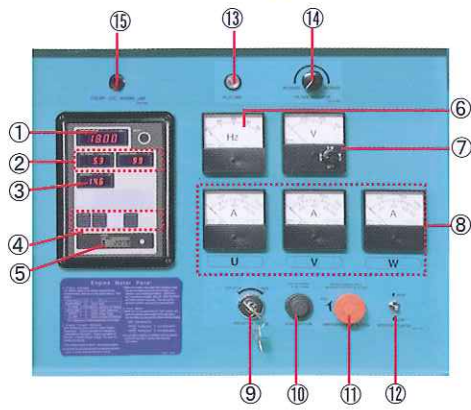
Denyo Generators are produced in our own premises; from designing and manufacturing the parts (except engine) up to the final assembly and control. Therefore we are able to respond quickly to the needs of our customers even for custom-made devices with short delivery times.

■ Quality and Endurance for commercial use

Denyo high quality generator for commercial use employs stronger windings, compared to other products. Due to the low noise level it qualifies especially for loads from inverters or electric devices like computers etc. Excellent starting performance due to the low transient reactance and the unique excitation system.

■ An electronic governor control system for realizing lower emissions**■ Voltage Regulation within $\pm 1.0\%$** **■ Frequency Regulation within 5.0% through no load to full load**

User Friendly Control Panel



DCA-400P is fully appointed advanced control panel. It offers high quality basic functions, allowing easy and reliable operation of your generating set.

- | | | |
|--|--|------------------------------|
| ① Engine speed indicator | ⑥ Frequency meter | ⑪ Emergency Stop Button |
| ② Oil pressure, water temp. indicator | ⑦ Volt meter (with change-over switch) | ⑫ Speed Regulator |
| ③ Battery charging voltage | ⑧ AC Ammeter(U, V, W) | ⑬ Pilot Lamp |
| ④ Warning lamp (For details, see the followings) | ⑨ Operation Switch | ⑭ Voltage Regulator |
| ⑤ Integrating time meter | ⑩ Starter Button | ⑮ Coolant level warning lamp |

Many Safety Devices

Items	Operation/display	Engine shut down	Circuit breaker will trip	Warning Lamp
Low lubricating oil pressure	○	○	-	○
High jacket water Temp.	○	○	-	○
Over current of Generator	-	-	○	-
Earth leakage (optional apparatus)	-	-	○	○
Over Speed	○	○	-	○
Fuel level failure*	○	○	-	○

DCA-400P is provided with a circuit breaker for protecting itself from short-circuiting and overload, and both an emergency shut-off device with alarm light automatically detect engine abnormalities and turn off the engine.

WARNING LAMP



○: Operates - : Does not operate * : Factory-installed option

Specifications

Model	DCA-400P		
AC Generator			
Frequency	Hz	50	60
Output Rating	Continuous	350(280)	400(320)
	Standby	385(308)	440(352)
No. of Phases	3-Phase, 4-Wire		
No. of Poles	4		
Rated Voltage(50/60Hz)	V	200/220 or 400/440	
Power Factor(lagging)	0.8		
Voltage Regulation	%	Within ±1.0	
Excitation	Brushless, rotating exciter with AVR		
Insulation	Classe F		

*1 Factory-installed option

Fuel Consumption(L/h)

Load	Frequency	
	50Hz	60Hz
0%	8.0	11.9
25%	23.2	26.8
50%	43.2	47.6
75%	58.3	72.9
100%	75.6	80.7

Ambient Conditions

The generating set should meet the following conditions:

- ① Ambient temperature : -5°C or higher, 50°C or lower
- ② Altitude : Up to 1000m above sea level
- ③ Relative humidity : 85% or lower

● In line with our policy of continuous development, we reserve the right to change specification without notice.

● Always follow the Operation Manual when storing, transporting, and operating the machine.

Diesel Engine

Model	Perkins 2206C	
Type	Vertical in-line, Direct Injected, Turbocharged, Aftercooled	
Rated Output	kW	305.3/348.8
Rated Speed	min ⁻¹	1500/1800
No. of Cylinders-Bore x Stroke	mm	6-130x157
Displacement	L	12.5
Fuel	Diesel Fuel(ASTM No.2 or equivalent)	
Fuel Tank Capacity	L*1	490
Lube Oil Capacity	L	40
Coolant Capacity	L	51.4
Battery x Quantity*1	12V-200Ahx2	

Dimensions and Weight

Dimensions	Length	mm	3250
	Width	mm	1450
	Height	mm	1890
Dry Weight	kg	3130	

Options



- Fuel Tank: 490L
- Battery : 12V-200Ahx2
- Exhaust pipe
- Muffler

Denyo Co., Ltd.

Head office : 2-8-5, Nihonbashi-horidomecho, Chuo-ku, Tokyo
103-0012, Japan
Tel: +81-3-6861-1111 Fax: +81-3-6861-1181
<http://www.denyo.co.jp>

Denyo The Denyo trademark is widely recognized as a brand, and is a registered trademark in 90 countries around the world.